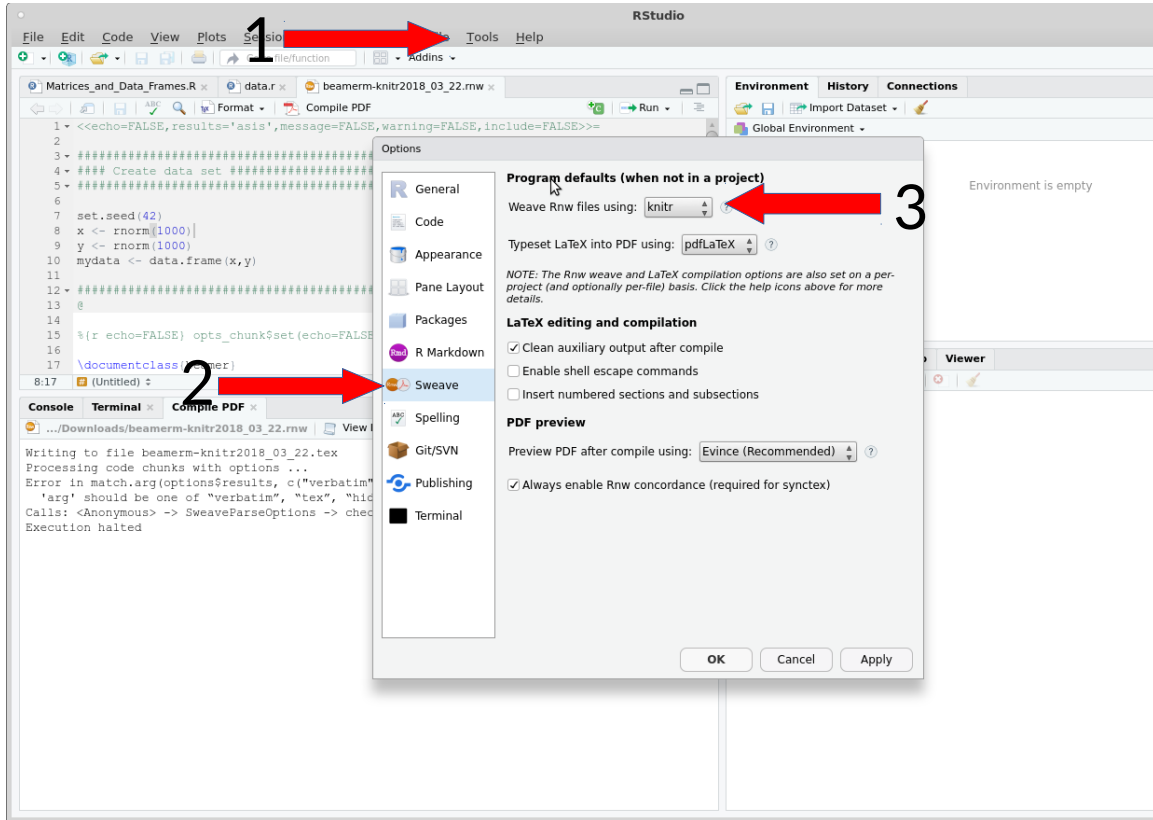


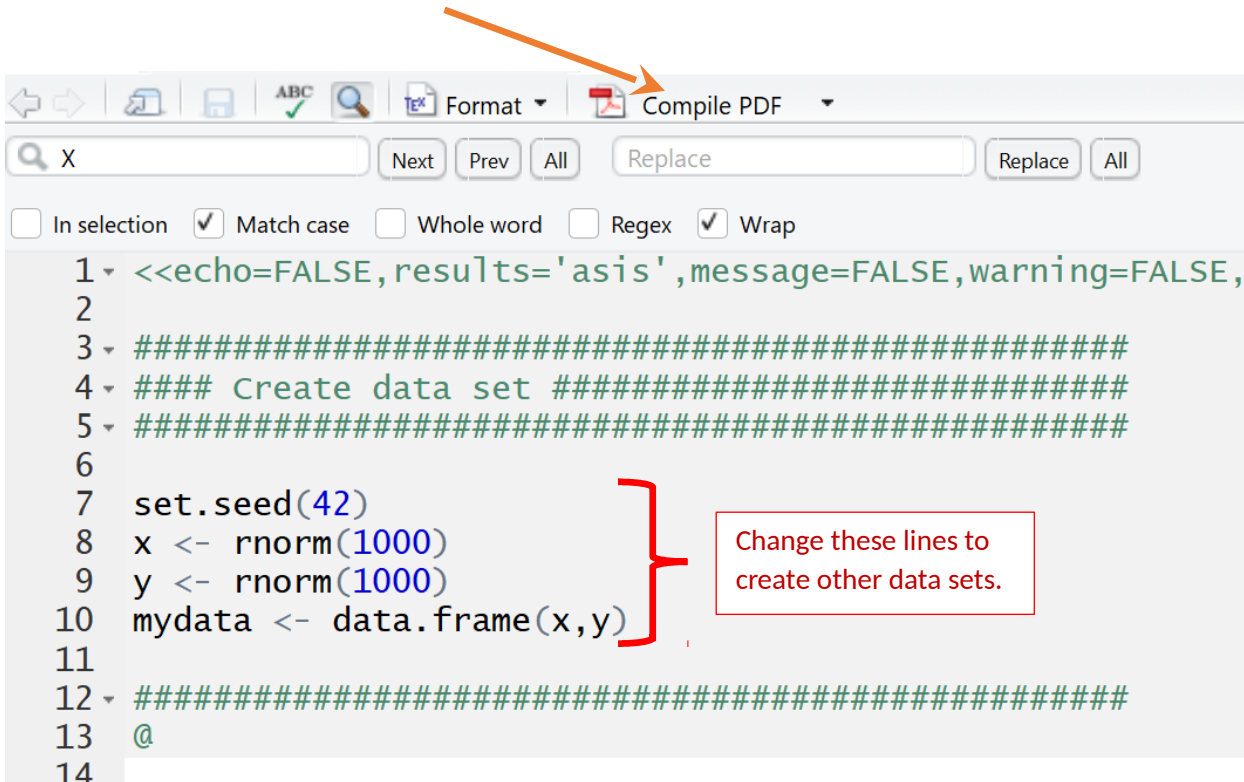
1. Generate lots of TDAmapper outputs for a fixed data set:

- a. Select knitr for compiling rnw files. Under (1) tools, select global options. Then (2) select Sweave. (3) Change “Weave Rnw files using” to “knitr”.



b. Open beamer-knitr2018_03_22.rnw in Rstudio.

c. Click on compile pdf and wait a bit to see pdf file of lots of TDAmapper outputs



d.) Create new artificial data sets to replace the “noisy square” created in lines 7 – 10.
You can use/modify some of the data sets in createArtificialDataSets2.r

2.) Cluster some data using clustering.r

3.) For fun, play around with imageclustering.r