

$y' = f(y)$

autonomous
diff eqn §2.5

2.) Circle the differential equation whose direction field is given below:

A) $y' = t^2$

C) $y' = 1$

E) $y' = y + 1$

G) $y' = (y + 1)(y - 2)$

I) $y' = (y + 1)(y - 2)^2$

K) $y' = -\frac{t}{y}$

B) $y' = \frac{1}{2}$

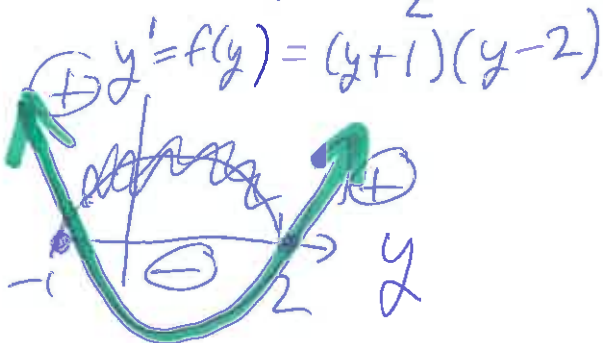
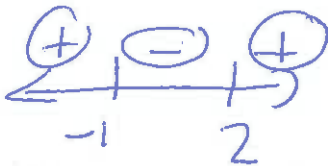
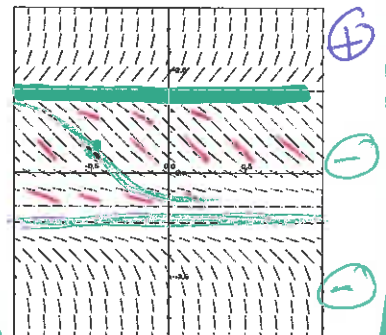
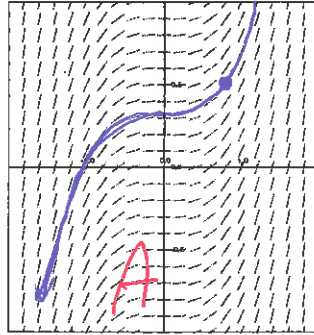
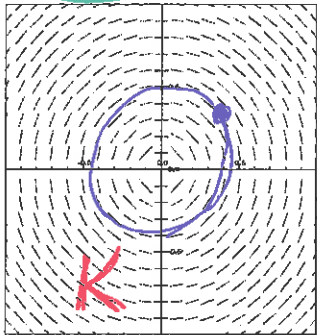
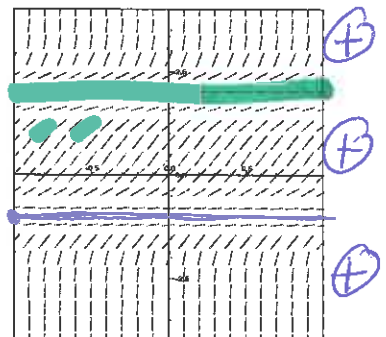
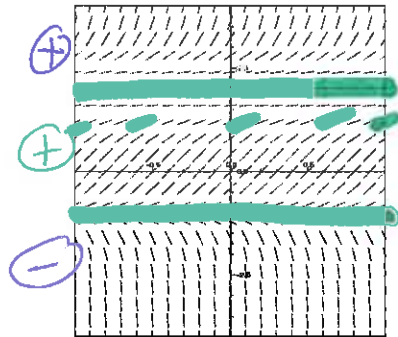
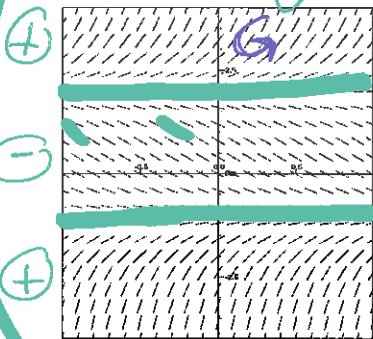
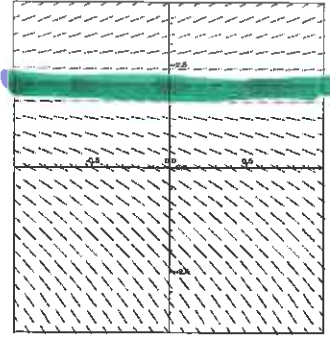
D) $y' = -1$

F) $y' = y - 2$

H) $y' = (y + 1)^2(y - 2)^2$

J) $y' = (y + 1)^2(y - 2)$

$y = -1, y = 2$



Example 4.) Given a, b real numbers,

I : set of all integrable functions on $[a, b] \rightarrow \mathbb{R}$,

$$I(f) = \int_a^b f$$

Proof: $I(sf + tg) = \int_a^b sf + tg = s \int_a^b f + t \int_a^b g = sI(f) + tI(g)$

Example 5.) The inverse of a linear function is linear (when the inverse exists).

Suppose $f^{-1}(x) = c, f^{-1}(y) = d$.

Then $f(c) = x$ and $f(d) = y$ and $f(ac + bd) = af(c) + bf(d) = ax + by$.

Hence $f^{-1}(ax + by) = ac + bd = af^{-1}(x) + bf^{-1}(y)$.

Example 6.) D : set of all twice differential functions \rightarrow set of all functions, $L(f) = af'' + bf' + cf$

Proof:

$$\begin{aligned} L(sf + tg) &= a(sf + tg)'' + b(sf + tg)' + c(sf + tg) \\ &= sa f'' + tag'' + sbf' + tb g' + scf + tcg \\ &= s(af'' + bf' + cf) + t(ag'' + bg' + cg) \\ &= sL(f) + tL(g) \end{aligned}$$

$$\begin{aligned} L(\psi_1) &= a\psi_1'' + b\psi_1' + c\psi_1 = 0 \\ L(\psi_2) &= a\psi_2'' + b\psi_2' + c\psi_2 = 0 \end{aligned}$$

Consequence 1: If ψ_1, ψ_2 are solutions to $af'' + bf' + cf = 0$, then $3\psi_1 + 5\psi_2$ is also a solution to $af'' + bf' + cf = 0$,

Proof: Since ψ_1, ψ_2 are solutions to $af'' + bf' + cf = 0$, $L(\psi_1) = 0$ and $L(\psi_2) = 0$.

Hence $L(3\psi_1 + 5\psi_2) = 3L(\psi_1) + 5L(\psi_2) = 3(0) + 5(0) = 0$.

Thus $3\psi_1 + 5\psi_2$ is also a solution to $af'' + bf' + cf = 0$

Consequence 2:

If ψ_1 is a solution to $af'' + bf' + cf = h$ and ψ_2 is a solution to $af'' + bf' + cf = k$, then $3\psi_1 + 5\psi_2$ is a solution to $af'' + bf' + cf = 3h + 5k$,

Since ψ_1 is a solution to $af'' + bf' + cf = h, L(\psi_1) = h$.

Since ψ_2 is a solution to $af'' + bf' + cf = k, L(\psi_2) = k$.

Hence $L(3\psi_1 + 5\psi_2) = 3L(\psi_1) + 5L(\psi_2) = 3h + 5k$.

Thus $3\psi_1 + 5\psi_2$ is also a solution to $af'' + bf' + cf = 3h + 5k$

$$\frac{1}{2} + \frac{1}{3} \neq \frac{1}{5}$$



$$\sqrt{3+6} \neq \sqrt{3} + \sqrt{6}$$

Linear Functions

A function f is linear if $f(ax + by) = af(x) + bf(y)$

Or equivalently f is linear if 1.) $f(ax) = af(x)$ and 2.) $f(x + y) = f(x) + f(y)$

Theorem: If f is linear, then $f(0) = 0$

Proof: $f(0) = f(0 \cdot 0) = 0 \cdot f(0) = 0$

Example 1a.) $f : R \rightarrow R, f(x) = 2x$

Proof: $f(ax + by) = 2(ax + by) = 2ax + 2by = af(x) + bf(y)$

Example 1b.) $f : R \rightarrow R, f(x) = 2x + 3$ is NOT linear.

Proof: $f(2 \cdot 0) = f(0) = 3$, but $2f(0) = 2 \cdot 3 = 6$. Hence $f(2 \cdot 0) \neq 2f(0)$

Alternate Proof: $f(0 + 1) = f(1) = 5$, but $f(0) + f(1) = 3 + 5 = 8$. Hence $f(0 + 1) \neq f(0) + f(1)$

Note confusing notation: Most lines, $f(x) = mx + b$ are not linear functions.

Question: When is a line, $f(x) = mx + b$, a linear function?

Example 2.) $f : R^2 \rightarrow R^2, f((x_1, x_2)) = (2x_1, x_1 + x_2)$

Proof: Let $\mathbf{x} = (x_1, x_2), \mathbf{y} = (y_1, y_2)$

$$a\mathbf{x} + b\mathbf{y} = a(x_1, x_2) + b(y_1, y_2) = (ax_1, ax_2) + (by_1, by_2) = (ax_1 + by_1, ax_2 + by_2)$$

$$\begin{aligned} f(ax_1 + by_1, ax_2 + by_2) &= (2(ax_1 + by_1), ax_1 + by_1 + ax_2 + by_2) \\ &= (2ax_1 + 2by_1, ax_1 + ax_2 + by_1 + by_2) \\ &= (2ax_1, ax_1 + ax_2) + (2by_1, by_1 + by_2) \\ &= a(2x_1, x_1 + x_2) + b(2y_1, y_1 + y_2) \\ &= af((x_1, x_2)) + bf((y_1, y_2)) \end{aligned}$$

Example 3.) D : set of all differential functions \rightarrow set of all functions, $D(f) = f'$

Proof: $D(af + bg) = (af + bg)' = af' + bg'$